



USER GUIDE

contents

Chapter 1 Introduction

Product description	5
Features	5
Input specifications	5
System requirements	6

Chapter 2 Hardware setup

Card installation	8
Cabling	9

Chapter 3 Software setup

DScaler installation	10
DScaler setup	14

Chapter 4 Appendix

Xcard settings	16
Driver installation	17

Chapter 5 Warranty & information

Warranty	20
Further information	22



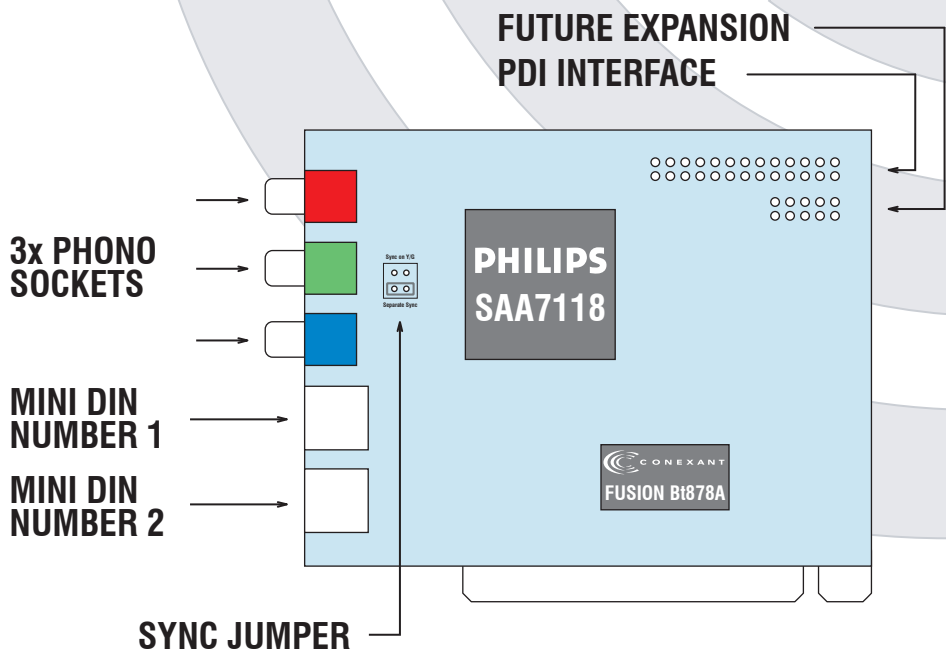
CHAPTER 1 INTRODUCTION

product description

SweetSpot combines a full compliment of the highest quality analogue inputs with the Parallel Digital Interface (PDI) to allow you to connect all your video devices to your PC and use it to match perfectly to your display, whether it be a projector, plasma, LCD or HDTV.

This solution combines the sophisticated deinterlacing, video processing and scaling of DScaler and represents a revolution in HTPC/HPC history.

SweetSpot turns a personal computer into a high performance digital media player and video processor/scaler and delivers unprecedented high quality video into your home cinema.



FEATURES

- Easy to install
- 32-bit PCI bus mastering, Plug-n-Play compliant
- 26-pin PDI connector compatible with the digital video output of REALmagic Xcard
- Analog Video Inputs: RGB, Component, S-Video and Composite
- Supports 480i (NTSC) and 576i (PAL)
- Fully compatible with the DScaler software
- Supports Microsoft Windows 98/ME/2000/XP

INPUT SPECIFICATIONS

- **26-Pin Parallel Digital Interface (PDI)**
For direct digital connection to a hardware MPEG decoding card, e.g. REALmagic Xcard.
- **3 x Phono Sockets**
Can be used in 3 different configurations
RGB (R, G and B are assigned to a phono each) if Composite Sync is required it is connected using Mini Din Connector 1
Component (Y, Pb and Pr are assigned to a phono each)
Composite inputs x 3
- **Mini Din Connector 1**
Can be used in 2 different configurations
S-Video
Composite inputs x 2 over S-Video
- **Mini Din Connector 2**
Can be used in 2 different configuration
S-Video
Composite inputs x 2 over S-Video



SYSTEM REQUIREMENTS

PC

Microsoft Windows 98/ME/2000/XP

Minimum 1GHz Processor or above (2Ghz or above recommended to use advanced DScaler image enhancement options)

AGP Video Card (ATI Radeon series recommended)

One available PCI 2.1 compliant slot (2 PCI slots required if using the optional SweetSpot DVD playback via REALmagic Xcard)

Graphic subsystem with DirectX 8.0 or higher

Input devices

Devices that support the input connections and standards listed.

Multiple input devices can be connected simultaneously.

Display devices

Display device must have the ability to accept an image from a PC: Usually either a VGA connection (15 pin DSUB or RGBHV) or a DVI connection. Typically these connections are only available on Plasma displays, projectors, LCD TVs and of course computer monitors.



CHAPTER 2: HARDWARE SETUP

CARD INSTALLATION

IMPORTANT

Static electricity can damage your equipment.

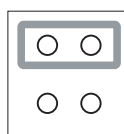
Do not remove SweetSpot from the anti-static bag until you are ready to install it into your PC.

Also limit your movement as this can build up static electricity.

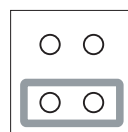
① Make sure your computer is turned OFF.

② Remove the case cover.

③ Set the jumper on SweetSpot according to your needs. To use Component input or RGsB, set to "Sync on Y / G". To use RGBS (the most common form of domestic RGB), set to "Separate Sync".



Sync on Y/G

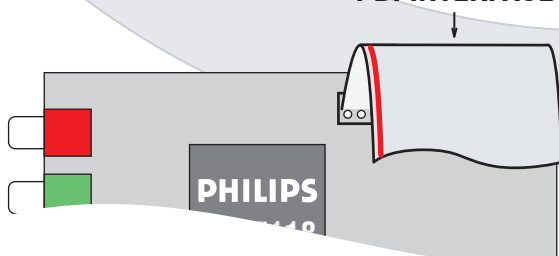


Separate Sync

④ Insert SweetSpot into an available PCI slot.

⑤ If you purchased a REALmagic Xcard, connect it to SweetSpot through the 26-pin PDI interface using the ribbon cable shipped with SweetSpot. The red line of the ribbon cable should be at the left when looking at the front of the card. SweetSpot and Xcard must be in adjacent PCI slots for the cable to reach.

PDI INTERFACE



- ⑤ Make sure SweetSpot is well seated in the slot before fastening the back plate with a screw.
- ⑦ If you purchased a REALmagic Xcard then install the XCard, infrared remote receiver and Xcard software following the instructions given in the REALmagic documentation included on the SweetSpot CD.

CABLING

As a general rule, use your AV receiver/amplifier to switch between as many of the signal types as possible. Typically this is Composite, S-Video and Component. Then connect one of each of these signal types from your AV receiver/amplifier to SweetSpot.

Very few AV receivers/amplifiers support RGB. If you have an RGBS source (a SKY digibox for example), then this should be connected directly using the SweetSpot Scart to SweetSpot lead available from our online shop (<http://www.pluggedin.tv/sweetspot>). You will then still have an S-Video enabled Mini Din socket free which which you can link to your AV receiver/amplifier for your other sources.

If you have multiple RGB sources (Games consoles for example) then it is advisable to use a high quality fully wired scart switching box to change between sources.

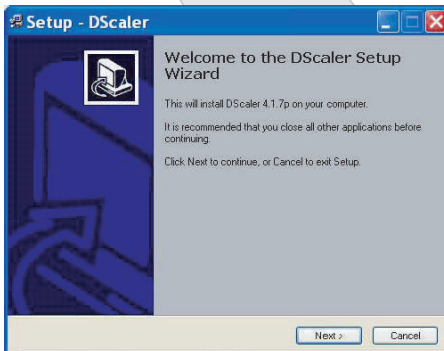
For best results always use high quality video cables for all connections.



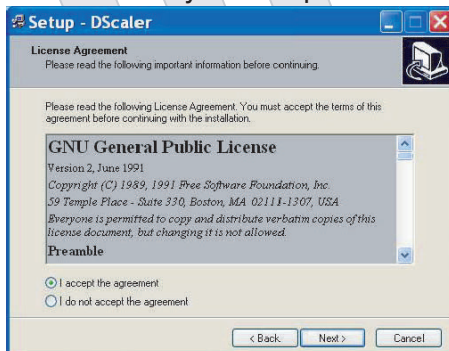
CHAPTER 3 SOFTWARE SETUP

DScaler Installation

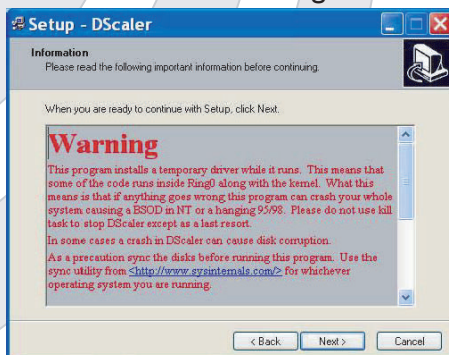
- ① Turn on your computer
- ② When the New Hardware Found message appears, choose "Cancel" for all. (i.e. Normally, you do not need to install the device driver because DScaler can drive SweetSpot directly. Please refer to the Appendix in case you want to install the WDM Bt878A driver for any reason.)
- ③ Place the CD that came with SweetSpot into your CD drive. If you don't have the CDROM, please download DScaler from the SweetSpot website (<http://www.pluggedin.tv/sweetspot>).
- ④ Navigate to the DScaler folder on the CD. Double Click the "DScaler417p.exe" to run the DScaler setup program.
- ⑤ Click "Next" to continue



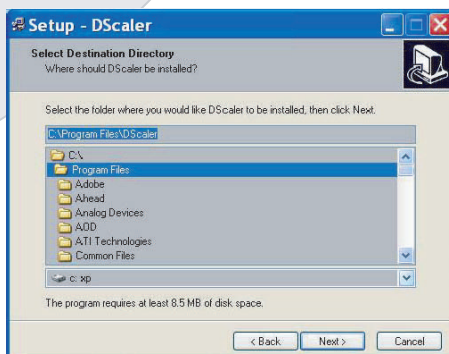
- ⑤ Click "Next" if you accept the license agreement.



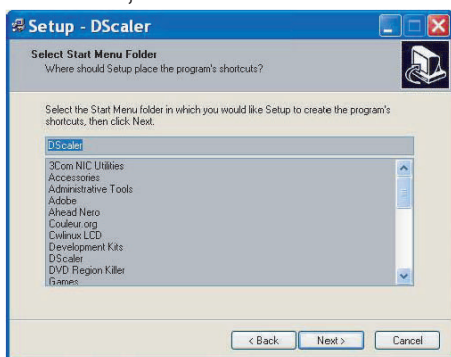
- ⑦ Click "Next" after reading the warning message.



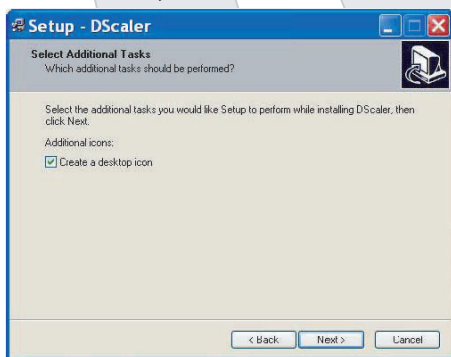
- ⑤ Choose a folder for installation. Then click "Next".



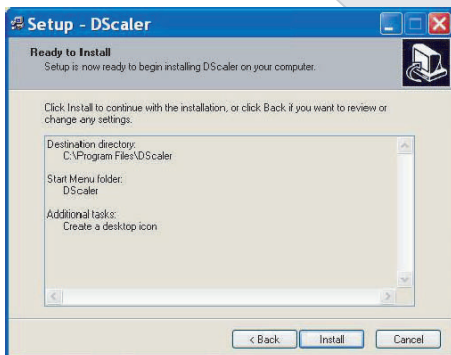
- 9 Select or create the Start Menu folder for DScaler shortcuts, then Click "Next".



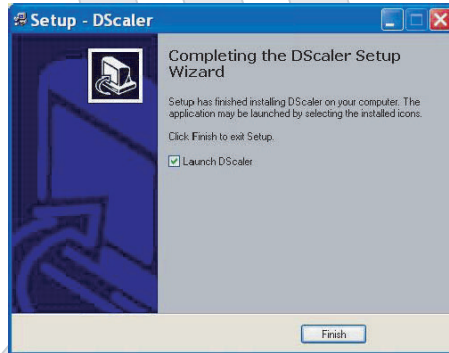
- 10 Choose to/not to create desktop icon and quick launch icon, then Click "Next".



- 11 Click "Install".



- 12 Choose to/not to launch DScaler program after finishing installation, then Click "Finish".



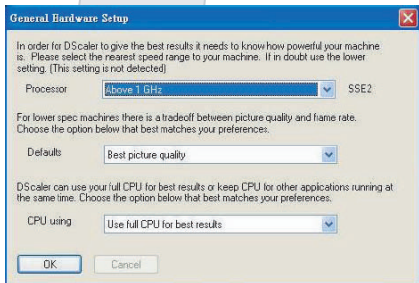
Installation is now complete



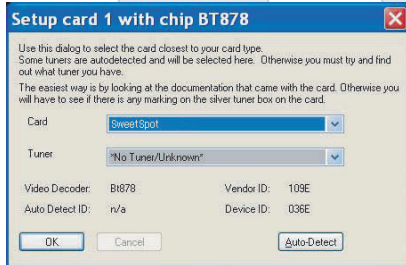
dscaler setup

① Launch DScaler

② Set CPU information according to your hardware and preferences. Click "OK"

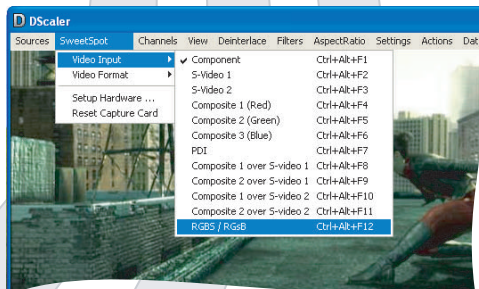


③ Select "SweetSpot", then Click "OK"



④ DScaler will now be running but you may not see a picture.

- ⑤ Make sure you have a Video source active and plugged in to SweetSpot
- ⑥ Use the DScaler menu and navigate to SweetSpot>Video Input and then select the active input from the menu provided.



- ⑦ You should will now see a picture. If the picture is unstable then make sure the Video Format matches your source by navigating to SweetSpot>Video Format and choosing the matching format (PAL, NTSC, SECAM, etc) from the menu provided. Also, if using Component or RGB sources the sync jumper on SweetSpot MUST be set correctly for the type of input signal being used (see Chapter 2 for further details).

NOTE:

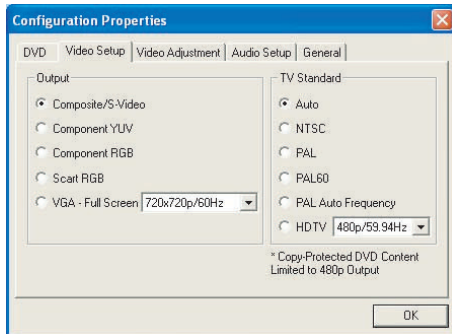
DScaler has many features for enhancing video quality. To get the most from SweetSpot it is recommended that you use some of the resources listed on the 'Links' page on the SweetSpot support website (<http://www.pluggedin.tv/sweetspot/support>)



CHAPTER 4 APPENDIX

Xcard settings

In order to use the PDI output of the REALmagic Xcard the video output must be set to anything other than VGA; HDTV must be disabled.

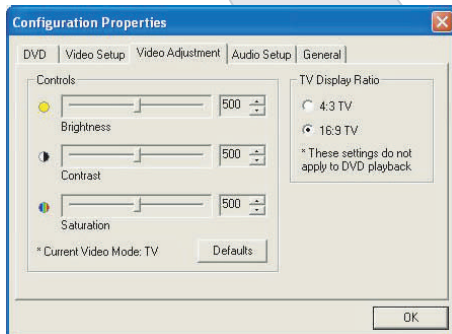


To achieve optimum picture quality it is advisable to use the following "Video Adjustment" settings when using the REALmagic Xcard.

Brightness = 500 (default value is 600)

Contrast = 500

Saturation = 500

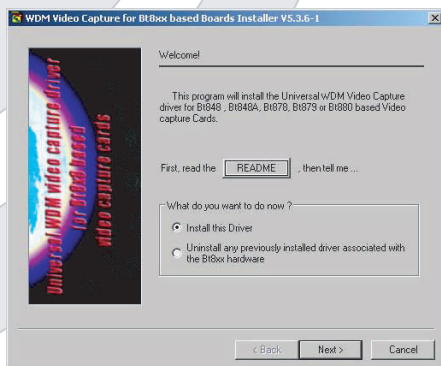


Note: XMP has no 'display window' of its own, the output from XMP is only visible through DScaler via the PDI option, or by using one of the direct video outputs from the back of Xcard into an external display (see Xcard documentation for further details if required).

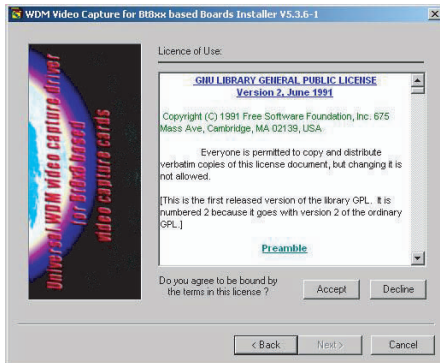
DRIVER INSTALLATION

In some circumstances it may be necessary to install a driver for the Conexant Fusion Bt878A chip to allow DScaler to see it (for example if you move SweetSpot in to a different PCI slot from the one in to which it was originally installed). If you have followed the instructions in chapters 2 and 3 and you still can't see a picture it is recommended that you install this driver.

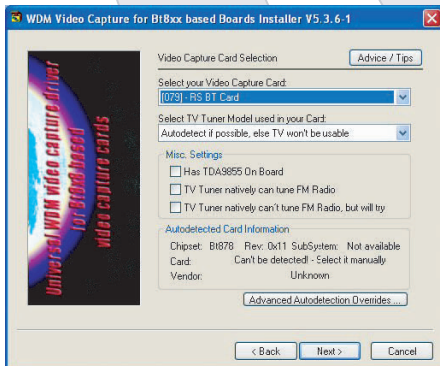
- ① Place the SweetSpot CD into your CD drive. If you don't have the CD, please download the driver from the SweetSpot website (<http://www.pluggedin.tv/sweetspot>).
- ② Double Click the "Btinstaller. exe" program under "WDM_Driver".
- ③ Choose "Install this Driver", then Click "Next".



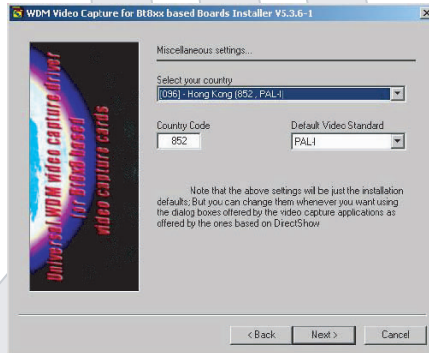
- ④ Choose "Accept" if you agree to the terms of the license agreement, then Click "Next".



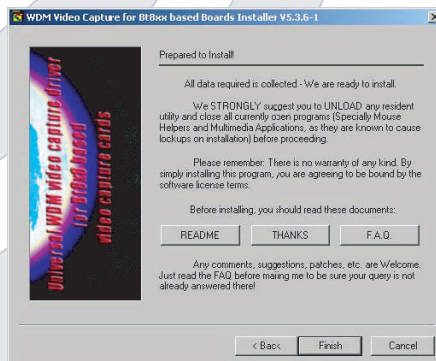
- ⑤ Choose "RS BT Card" as the Video capture Card and leave everything else as default, then Click "Next".



- ⑤ Choose your country and it will automatically select one standard as default, then Click "Next". There is no tuner on SweetSpot so it actually does not matter which country you choose.



- ⑦ Click "Finish" to complete the driver installation.



NOTE:

If you're using either 2000/ XP, you may be asked if you want to continue the installation twice. Click "Continue to install".



CHAPTER 4 WARRANTY & INFORMATION

WARRANTY

Pluggedin.TV Europe Limited ("Pluggedin.tv") warrants all products supplied for 12 months from date of purchase to the original purchaser that the product is free from defects in material and workmanship. If, after inspection, you discover any defects in material or workmanship, Pluggedin.tv will have the option to repair, or replace the defective product free of charge. This one-year warranty does not cover damages from normal wear and tear or from accidental damage, misuse, improper care, alterations and damage caused in transportation by a common carrier or airline.

There are no other warranties expressed or implied, including, but not limited to, the implied warranties of merchantability and the fitness for a particular purpose beyond the terms of this one-year warranty. The one-year warranty offered by Pluggedin.tv herein may not be modified by any oral representations made by any employee, agent or representative of Pluggedin.tv.

Repair or replacement as provided under this warranty is the exclusive remedy of the consumer. Pluggedin.tv shall not be liable for any incidental or consequential damages for breach of any expressed or implied warranty on this product, except to the extent prohibited by applicable law, any implied warranty of merchantability or fitness for a particular purpose on this product is limited in duration to the duration of this warranty. If you need to have your Pluggedin.tv product repaired or replaced under the conditions of this one-year warranty, please contact customer service at customerservice@Pluggedin.tv

continued...

Limitation of Liability:

BOTH YOURS AND PLUGGEDIN.TV'S LIABILITY SHALL BE LIMITED TO THE PRICE PAID FOR PRODUCT. IN NO EVENT SHALL EITHER YOU OR PLUGGEDIN.TV BE LIABLE TO THE OTHER FOR ANY INDIRECT, SPECIAL, INCIDENTAL OR CONSEQUENTIAL DAMAGES RESULTING FROM PERFORMANCE OR FAILURE TO PERFORM UNDER THIS AGREEMENT, OR USE OF ANY GOODS OR SERVICE SOLD PURSUANT HERETO, WHETHER DUE TO A BREACH OF CONTRACT, BREACH OF WARRANTY, NEGLIGENCE , OR OTHERWISE. NEITHER YOU NOR PLUGGEDIN.TV SHALL HAVE ANY LIABILITY TO THE OTHER FOR INDIRECT OR PUNITIVE DAMAGES, OR FOR ANY CLAIM BY ANY THIRD PARTY EXCEPT AS EXPRESSLY PROVIDED HEREIN.



INFORMATION

Information

→ <http://www.pluggedin.tv/sweetspot>

Contains an FAQ, software downloads, links to support forums, contact details and links for background reading.

→ <http://www.dscaler.org>

SweetSpot utilises DScaler, a free software package, open source, coded under the GNU GPL Licence (<http://www.fsf.org/licenses/gpl.html>). Please visit this link for more details.

→ <http://www.pmsvideo.com>

Manufacturers of SweetSpot and other fantastic HTPC-related products.

→ <http://www.sigmadesigns.com>

Manufacturers of the REALmagic Xcard and other PC video related products.

Support

→ <http://www.pluggedin.tv/sweetspot/support>

Contains an FAQ, software downloads, links to support forums, contact details and links for background reading.



